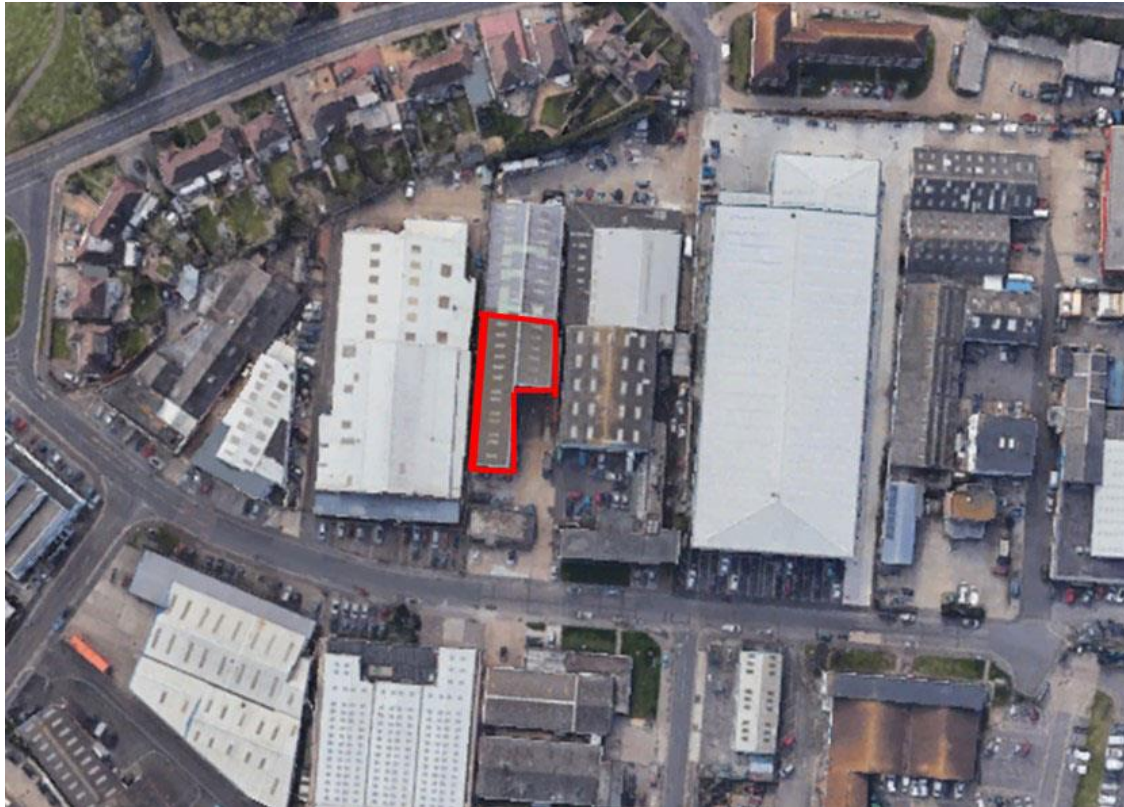


Units B, C & D, 4 Commerce Way



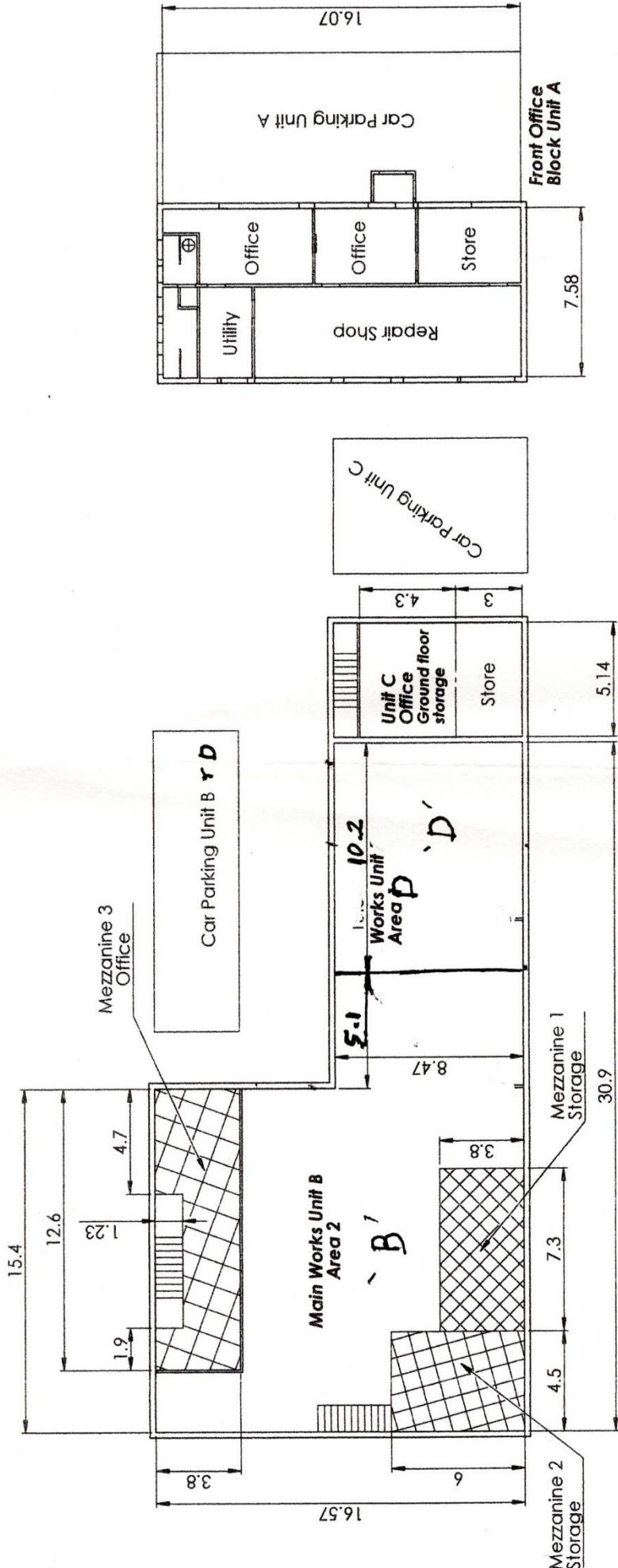
All three units equate to circa 5,000 sqft

These can be let as one unit or separately, ranging from 1,000sqft. to 3,500sqft.

£10 per sqft.

For further details please contact:

Roy Powel Mob: 07766 522633 email: ROY.W.POWEL@GMAIL.COM



**4 Commerce Way
Lancing Business Park
BN15 8TA**